

JUTLAND OFFICE PARK

FOR LEASE



McKeeCommercialRealEstate.com

**4141 Jutland Dr
San Diego, CA 92117**

Keith Herbert
KHerbert@mckeecompany.com
619.642.2711 x205
CalDRE #01892190

James Shelton
jshelton@mckeecompany.com
619.642.2711 x222
CalDRE #02091906

JUTLAND OFFICE PARK



Jutland Office Park, located at 4141 Jutland Drive in San Diego, is a three-story office building with 39,207 square feet of space. It offers excellent freeway visibility to I-5, ample free parking, and features like natural light, elevator access, and common area restrooms on each floor. The building is centrally located near La Jolla, Pacific Beach, and Clairemont.



Exclusive location between La Jolla and Clairemont



Signage opportunities, visibility from I-5 Freeway



Plentiful free guest parking



Elevator access



Competitive lease rates, NO triple net expenses.



39,207 SF Professional Office Park

Suite 300

5,585 RSF

McKeeCommercialRealEstate.com



4141 Jutland Drive, Suite 300
Approximate Size: 5,585 RSF

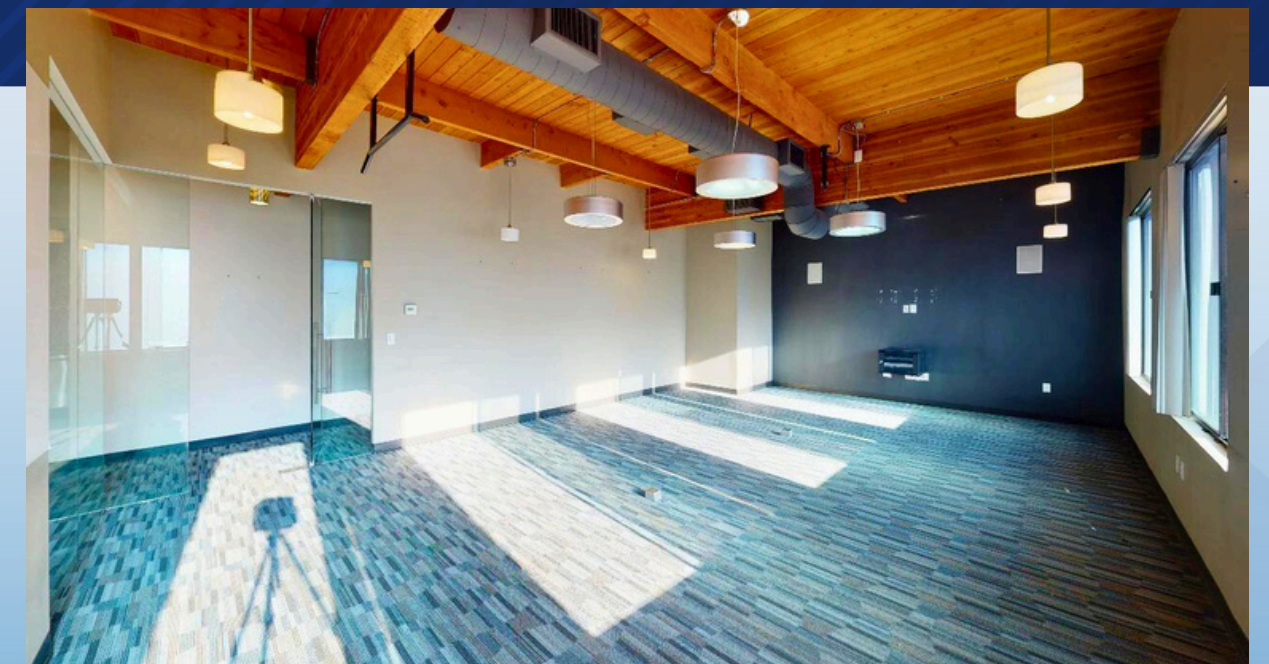
SIZES AND DIMENSIONS ARE APPROXIMATE. ACTUAL MAY VARY



Suite Details

- 7 Private Offices
- Modern Kitchen
- Area with 17 Workstations
- Conference Room & Storage

Location: Top Floor
Functional windows with tall, exposed wood ceilings.
North/West Facing.



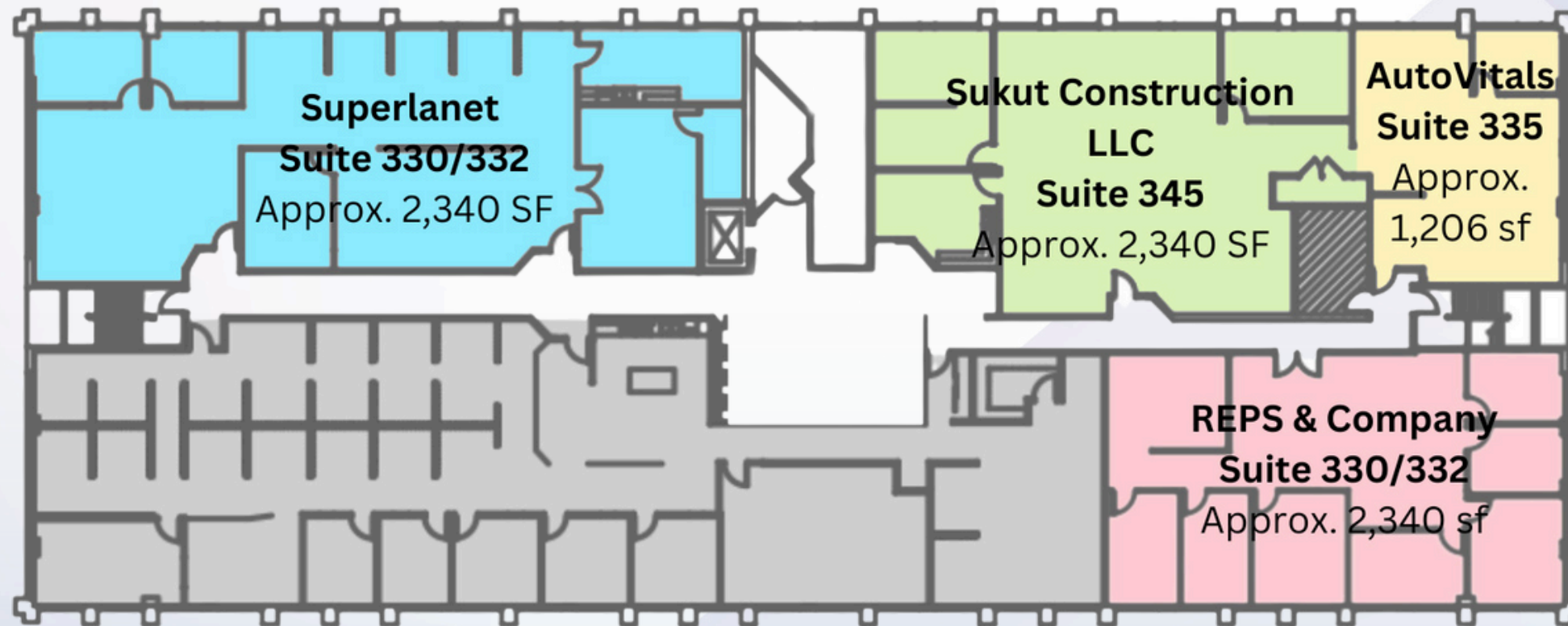
Virtual Tour



Suite 300

5,585 RSF

McKeeCommercialRealEstate.com



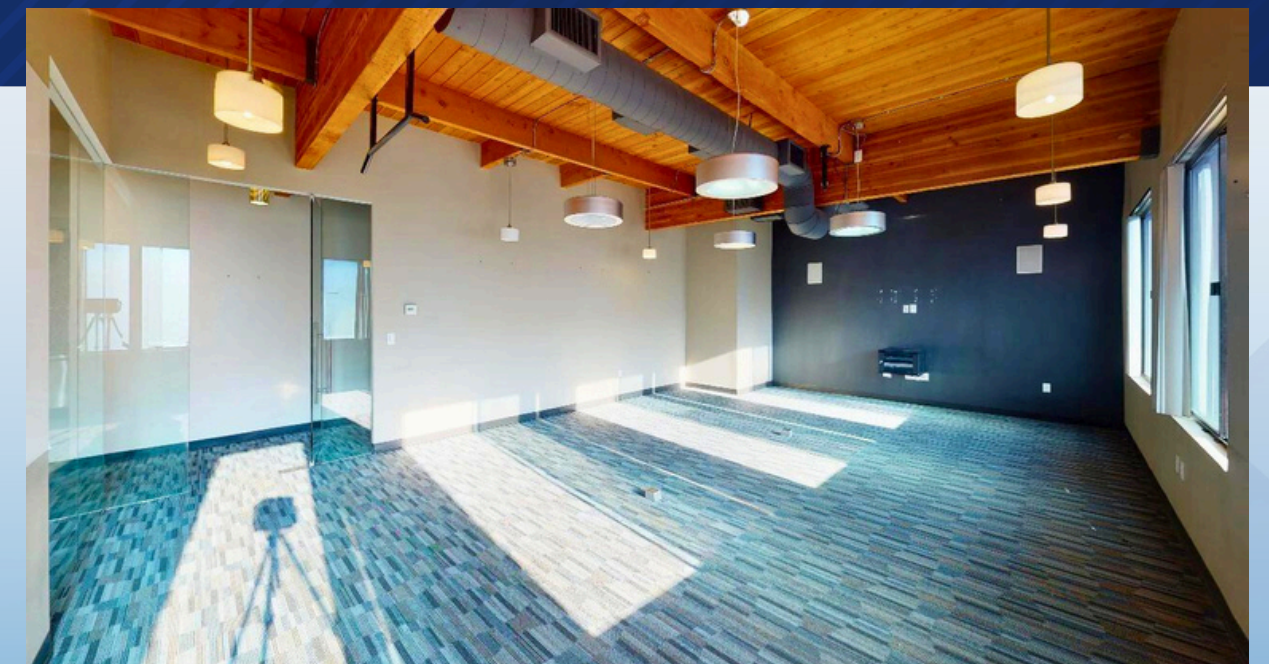
4141 Jutland Drive
Third Floor



Suite Details

- 7 Private Offices
- Modern Kitchen
- Area with 17 Workstations
- Conference Room & Storage

Location: Top Floor
Functional windows with tall,
exposed wood ceilings.
North/West Facing.



Virtual Tour



JUTLAND OFFICE PARK



**4141 Jutland, Suite 300
San Diego, CA 92117**



McKeeCommercialRealEstate.com



Keith Herbert
Director
KHerbert@mckeecompany.com
619.642.2711 x205
CalDRE #01892190



James Shelton
Senior Associate
jshelton@mckeecompany.com
619.642.2711 x222
CalDRE #02091906

Contact Us!